



CITROËN

AMI

Handbook

nothing
moves us
like **citroën**



ACCESS TO THE HANDBOOK



MOBILE APPLICATIONS

Install the **MyCitroën App** application (content available online).
Also available in the **Scan MyCitroën** application (content available offline).



ONLINE

View or download the handbook at the following address:

<http://service.citroen.com/ACddb/>

Scan this QR Code for direct access.

Select:

- the language,
- the vehicle and body style,
- the issue period of the handbook corresponding to the date of 1st registration of the vehicle.



This symbol indicates the latest information available.

WELCOME

Thank you for choosing Citroën AMI.

This document contains essential information and recommendations you can use to get to know your mobility device (hereafter: 'vehicle') in complete safety. We strongly recommend that you familiarise yourself with it.

Your vehicle is fitted with some of the equipment and accessories shown in this document, depending on the country of sale.

The descriptions and illustrations are for guidance only.

This vehicle is marketed by Automobiles CITROËN, a public limited company with a share capital of 159,000,000 euros whose head office is located at 210 boulevard de l'Europe, 78300 POISSY, FRANCE, registered with the Trade and Company Register (RCS) of Versailles under number 642 050 199, hereafter referred to as the "Manufacturer" and who reserves the right to modify the technical characteristics, equipment and accessories without being required to update this document.

If the vehicle requires any repairs or maintenance, contact a member of the Manufacturer's dealer network, hereafter: "dealer or qualified workshop".

The Manufacturer declares, in accordance with the provisions of European legislation (Directive 2000/53) relating to End-of-Life Vehicles, that it achieves the objectives set by this legislation and that recycled materials are used in the manufacture of the products that it sells.

No part of this document may be reproduced or translated without written permission from the Manufacturer.

Key



Safety warning



Additional information



Environmental protection feature



Location of equipment/button indicated using a black area

Overview ■	Safety 5	Technical data 9
Eco-driving ■	Safety - General recommendations 16	Electric motor 36
Dashboard instruments 1	Hazard warning lamps 16	Dimensions 36
Instrument panel with monochrome display screen 6	Horn 16	Identification markings 37
Warning and indicator lamps 6	Seat belts 16	Alphabetical index ■
Charge level 7	Child seats 17	Appendix ■
Distance recorder 8	Driving 6	
Access 2	Driving recommendations 19	
Doors 9	Parking brake 19	
Windows 9	Drive selector 20	
Ease of use and comfort 3	Starting/Stopping the vehicle 20	
Driver's seat 10	Practical information 7	
Door mirrors 10	Charging the traction battery 22	
Ventilation/Heating/Demisting 10	Electric motor 24	
Interior fittings 11	Checking levels 24	
Available accessories 12	Checks 26	
Lighting and visibility 4	Free-wheeling 27	
Exterior lighting 14	Advice on care and maintenance 27	
Direction indicators 14	In the event of a breakdown 8	
Wipers/Screenwash 14	Changing a wheel 29	
Changing a wiper blade 15	Changing a bulb 29	
	Changing a fuse 30	
	12 V battery 32	
	Towing the vehicle 35	



CITROËN



TotalEnergies

CITROËN PREFERS TotalEnergies

Safety precautions - Electric vehicles

An electric vehicle has two types of electrical circuit:

- vehicle traction provided by a 48 V battery module.
- power supply for the on-board circuit (instrument panel, lights, ventilation/heating, USB socket, etc.), provided by a 12 V battery.

Precautions relating to the 48 V electrical circuit



The components and cables which make up the traction electrical circuit are marked with this symbol.



The electric vehicle's charging system may become hot during use and after the ignition is switched off.

All work on or modifications to the vehicle's electrical system (traction battery, cables and other components visible from the interior or exterior) is strictly prohibited - risk of severe burns or electric shock (short-circuit)!

If required, call a dealer or qualified workshop.

Precautions relating to the electrical installation



Before any connection is made, check that the electrical installation to be

used complies with applicable standards and is compatible with the vehicle.
In case of doubt, contact a professional installer.

Precautions related to vehicle cleaning



Before cleaning the vehicle, check that the windows and doors are properly closed.

Do not wash the vehicle while the traction battery is being charged.

Precautions in the event of a breakdown

In the event of a complete loss of power, the vehicle is no longer driven by the electric motor. Quickly move the vehicle to a safe place in accordance with all roadside safety regulations. Immobilise the vehicle, activate the hazard warning lamps, put on the high visibility safety vest, leave the vehicle and find a safe place. Call a dealer or qualified workshop as soon as possible.

Precautions related to road accidents



In the event of an accident or impact to the vehicle's underbody

In situations like these, the electrical circuit or traction battery may be seriously damaged.

Stop as soon as it is safe to do so.

Apply the parking brake and switch off the ignition.

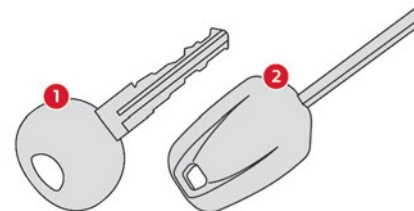
Call a dealer or qualified workshop as soon as possible.



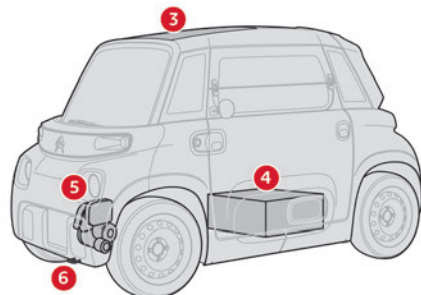
In the event of exposure to a fire

Immediately exit and evacuate all passengers from the vehicle. Never attempt to fight the fire yourself - risk of explosion! You must immediately contact the emergency services, informing them that the incident involves an electric vehicle.

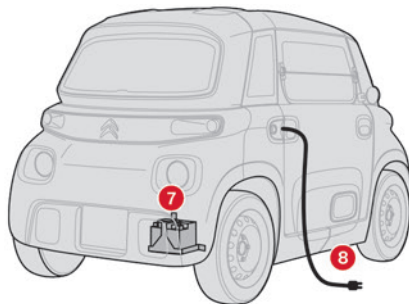
Overview



1. Key for locking/unlocking doors
2. Ignition key for switching motor on/off

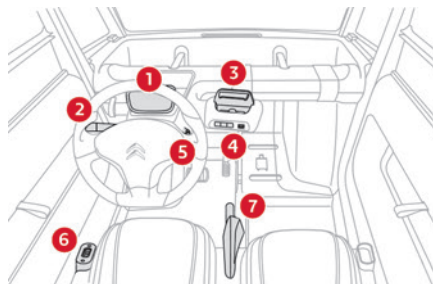


- 3. Panoramic glass sunroof
- 4. 48 V traction battery
- 5. Electric motor
- 6. Integrated towing eye



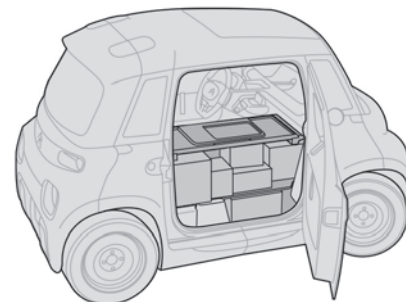
- 7. 12 V battery
- 8. Charging cable

Instruments and controls



- 1. Instrument panel with monochrome display screen
- 2. Multifunction control stalk:
 - Wipers/Screenwash
 - Direction indicators
 - Horn
- 3. Smartphone rest
- 4. Switch panel:
 - Heating/Demisting
 - Ventilation
 - Hazard warning lamps
 - USB socket
- 5. Motor start/stop switch
- 6. Drive selector
- 7. Parking brake

CARGO version



The CARGO version is an electric mobility solution for professional use.

The passenger seat is replaced by a modular load space bounded by:

- a fixed vertical partition, separating the driver and the entire load.
- an upper movable shelf, leaving the right door mirror visible.

The loading (e.g. mail, parcels, tools) is always accessible from the outside as well as from the inside by raising the upper movable shelf.

An additional closed storage compartment (e.g. smartphone, pens, glasses) is located at the back of the upper movable shelf.

Eco-driving

Eco-driving is a range of everyday practices that enable you to optimise your vehicle's consumption of electrical energy.

Optimising driving range

How much electrical energy your vehicle consumes depends on your speed, driving style, vehicle load and route.

Apply pressure gradually to the accelerator pedal and maintain safe distances between vehicles.

Anticipate the need to slow down well in advance and, where possible, brake smoothly or slow the vehicle using engine braking with the regenerative braking function.

Control the use of electrical equipment

Before setting off, if the passenger compartment is too warm, cool it down by opening the windows in order to reduce the use of the ventilation system.

In the event of a frost, remove the ice from all glass surfaces using a scraper in order to reduce the use of the heating/demister function.

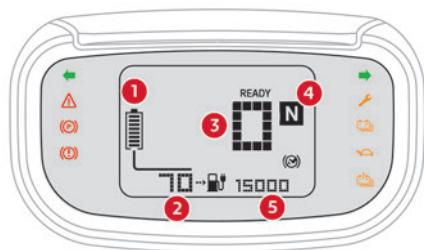
Comply with the servicing instructions

Check tyre pressures regularly when the tyres are cold, referring to the label affixed to the base of the passenger seat.

Perform this check particularly at each change of season and after the vehicle has been stationary for a long period.

If the tyres need to be replaced, you must fit tyres which are identical to the original ones (size, load/speed rating, type and structure). Ensure the vehicle is serviced regularly and observe the schedule of service checks indicated in the Manufacturer's service schedule.

Instrument panel with monochrome display screen



1. Traction battery charge level
2. Driving range or remaining charging time
3. Speedometer (mph or km/h)
4. Drive selector position
5. Distance recorder (miles or km)

Warning and indicator lamps

Displayed as warning lamps on the sides of the instrument panel and symbols on the display screen, the indicator lamps inform you of a fault or when a system is in operation. Certain lamps may come on in one of two modes: fixed (continuous) or flashing.

An active lamp may be accompanied by an audible signal.

When the ignition is switched on

The red or orange warning lamps come on for a few seconds. These warning lamps should go off as soon as the motor is switched on.

If a lamp remains lit

If a warning lamp remains lit (red or orange), this indicates the presence of a fault which needs further investigation.

For more information on a system or a function, refer to the corresponding section.

List of warning and indicator lamps

Red warning/indicator lamps

STOP



Fixed, accompanied by an audible signal (3 beeps).

A serious fault has been detected.

You must stop the vehicle.

Stop as soon as it is safe to do so and switch off the ignition.

Call a dealer or qualified workshop.

Parking brake



Fixed.

The parking brake is still applied or not properly released.

To move off, release the parking brake fully.



Flashing, along with the fixed cable connected indicator lamp, dashes instead of the charging time and an audible signal (repeated beeps).

The charging cable is connected and the parking brake is released.

Charging will only be possible after applying the parking brake.

The vehicle cannot be started while the charging cable is connected.

Braking



Fixed, accompanied by an audible signal (3 beeps).

The brake fluid level has dropped significantly.

You must stop the vehicle.

Stop as soon as it is safe to do so and switch off the ignition.

Check for the presence of a leak.

Call a dealer or qualified workshop.

Orange warning/indicator lamps

Service



Fixed, accompanied by an audible signal (1 beep).

One or more major faults, for which there is/are no specific warning lamp(s), have been detected.

Call a dealer or qualified workshop.



Fixed, combined with another warning lamp.

Refer to the explanation for the corresponding lamp.

Minimum traction battery charge level

Fixed, combined with the last bar on the charge meter showing and an audible signal (1 beep).

The traction battery has reached the first alert threshold.

Put the vehicle on charge as soon as possible.



Fixed, combined with the flashing vehicle driving range warning

lamp and an audible signal (1 beep).

The traction battery has reached the second alert threshold.

The motor's power decreases rapidly.

You must put the vehicle on charge.

Limited power

Fixed, accompanied by an audible signal (1 beep).

A drop in performance in the drive train due to a low battery temperature.

The decrease in motor power temporarily affects the vehicle's performance.

Maximum traction battery temperature

Fixed, combined with the STOP warning lamp and an audible signal (1 beep).

The traction battery's temperature is too high.

You must stop the vehicle.

Stop as soon as it is safe to do so and switch off the ignition.

Call a dealer or qualified workshop.

Green warning/indicator lamps**Direction indicators**

Flashing left or right indicator with audible signal.

The left or right direction indicator lamps are on.



Flashing left and right indicators with audible signal.

The hazard warning lamps are on.

White indicator lamps**Foot on the brake**

Flashing.

Insufficient pressure or no pressure detected on the brake pedal for changing the direction of travel.

Depress the brake pedal to select or change the direction of travel.

Vehicle ready to drive

Fixed.

The vehicle is switched on.

The warning lamp remains on while driving.

The lamp will go out when you switch off the motor and exit the vehicle.



Fixed, accompanied by an audible signal (1 beep).

A drive position is selected without any pressure on the pedals for 5 seconds.

Press **D** or **R** on the drive selector, then accelerate or brake.

Vehicle driving range

Fixed.

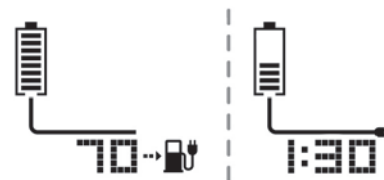
The remaining driving range is displayed.

Cable connected

Fixed, combined with the remaining charging time.

The charging cable is connected to the charging socket.

The traction battery is being charged.

Charge level

This indicates traction battery charge level, showing up to 8 bars.

With the ignition switched on and the vehicle moving, this is permanently displayed below the remaining driving range (miles/kilometres).

When the vehicle is being charged, dashes are displayed for the first 3 minutes, then the time (hours/minutes) remaining until charging is complete.

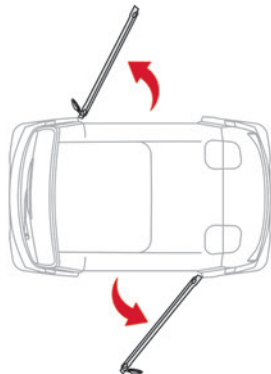
For more information about the **Warning lamps**, refer to the corresponding section.

Distance recorder

This measures the total distance travelled by the vehicle since its initial registration.

The distance recorder is permanently displayed when the ignition is switched on and the vehicle is being charged.

Doors

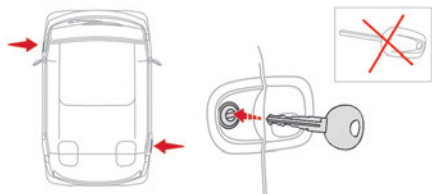


The vehicle has two doors which open in opposite directions.



Do not open the door when moving.

From outside



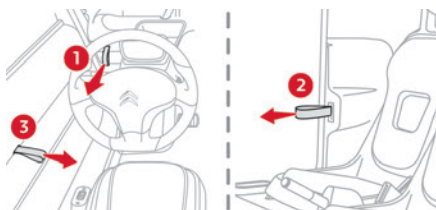
► Turn the access key to the right/left in the door lock to unlock/lock it.

► Press the door lock to partially open the door.



After unlocking a door, do not turn the key to the left as you risk being trapped in the vehicle when the door is closed again.

From inside



► To open the driver's door, pull strap **1** at the end of the dashboard.

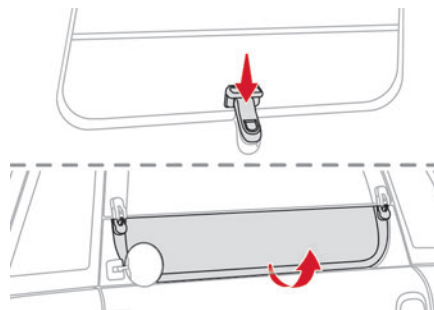
► To open the passenger door, pull strap **2** to the right of the passenger seat.

► To close the door, pull strap **3** in the middle of the door.

Windows

Each window has two parts:

- A fixed upper section.
- A moveable lower section.



To open:

- Press the locking handle to release the window.
- Lift the window until it stops to keep it fully open.



Take care when opening the window - there is a risk of it unlocking and lowering while driving, if it is not properly locked in the stopped position or on a very uneven road surface.

To close:

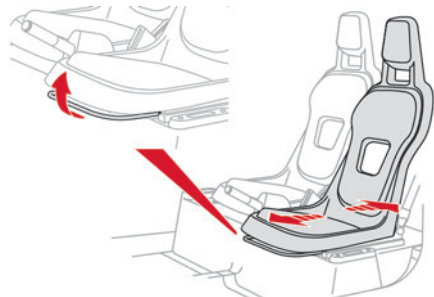
- Pull the window to unlock it from the outside.
- Lower the window fully until it locks in place.
- Press against the window to check that it is locked.



Take care when closing a window - you risk trapping your fingers!

Driver's seat

Longitudinal adjustment

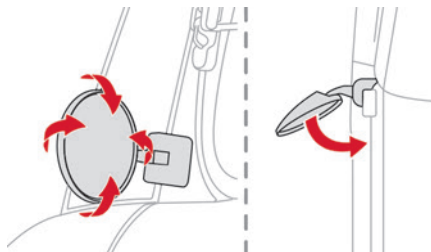


- Lift the bar and slide the seat forwards or backwards.
- Release the bar to lock the seat in position on one of the notches.



The passenger seat does not slide.

Door mirrors



The door mirrors are adjusted and folded manually.

- Move the door mirror in four directions in order to obtain the best visibility.

Ventilation/Heating/Demisting

The air circulating inside the passenger compartment comes in from outside through an opening at the base of the windscreen.

The controls are located on the central control bar on the dashboard.



To ensure good air flow, be sure not to block the air inlet and extractors.

Ventilation



- Press this button to turn ventilation on/off (confirmed by warning lamp lighting up/going out).

Heating/Demisting



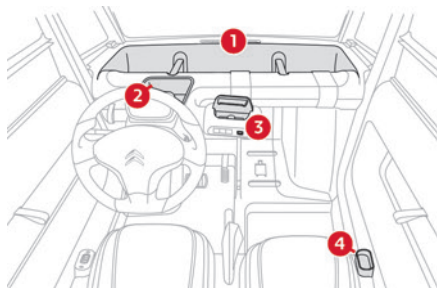
- Press this button to turn Heating/Demisting on/off (confirmed by warning lamp lighting up/going out).
The ventilation also turns on/off.



The demisting system reduces misting on the windscreen. If the side windows are misted up, wipe them with a clean, soft cloth.

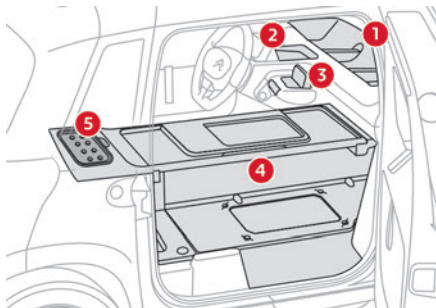
Interior fittings

Except CARGO version



1. Open triple-compartment storage unit
2. Driver's storage compartment/Housing for Bluetooth speaker
3. Smartphone rest/USB socket
4. Passenger storage compartment

With CARGO version



1. Open triple-compartment storage unit
2. Driver's storage compartment/Housing for Bluetooth speaker
3. Smartphone rest/USB socket
4. Modular load space
5. Closed storage compartment
 - Press the central button to open the cover.

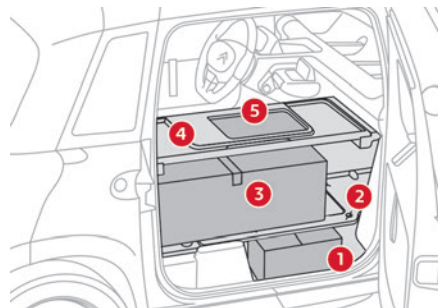
USB socket



The USB socket can be used to charge a portable device.

Modular load space

(With CARGO version)



The modular load space consists of:

1. Lower storage area
2. Lower retractable shelf

3. Central storage area

Lashing rings are provided for securing objects with tensioners or straps (not supplied).

4. Upper movable shelf

(parked vehicle, max. 40 kg for occasional use)

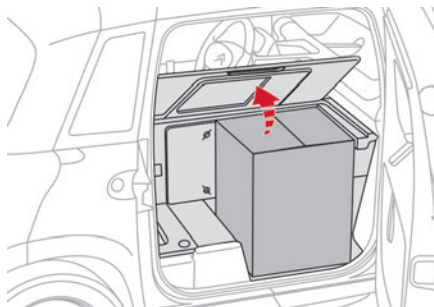
5. Document holders

Maximum loading weight: 140 kg

Lower retractable shelf

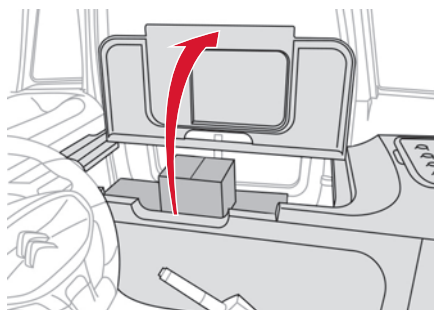
- ▶ When loading long, flat objects (max. 1.2 m) and limited load (<20 kg), put the lower retractable shelf in place.
- ▶ Secure the load in the middle of the lower retractable shelf with appropriate fasteners (tensioners or straps not supplied).
- ▶ When loading high and heavy objects (>20 kg), raise the lower retractable shelf against the fixed vertical partition.

Upper movable shelf - Access from outside



- ▶ Raise the upper movable shelf slightly and pull it towards you.
- ▶ Push the upper movable shelf into its retaining stops.

Upper movable shelf - Access from inside



- ▶ Raise the upper movable shelf towards the side window until it stops.



Do not drive with the upper movable shelf up - Risk of dropping the upper movable shelf and poor visibility!
Do not drive with bulky objects on the upper movable shelf - Risk of falling objects and poor visibility!

Available accessories

The Manufacturer offers a wide range of original accessories.

These accessories have all been adapted to suit the vehicle and are all backed and guaranteed by the Manufacturer.

For more information on the after-sales accessories available, visit the website of our partner Mister-Auto or contact an authorised dealer.

Exterior

Wheel trims/Quarter-light decal/Lower door decal.

Interior

Driver and passenger mats.

Door nets/Separator net/Load retaining net (CARGO version)/Front passenger hook/
Passenger purse hook/Dashboard storage.
Smartphone retainer clasp/Connector unit.
Additional interior mirror (CARGO version).



Some models come fitted with longitudinal roof bars. These are purely for aesthetic purposes. Transverse roof bars must not be fitted to these longitudinal bars.

Exterior lighting

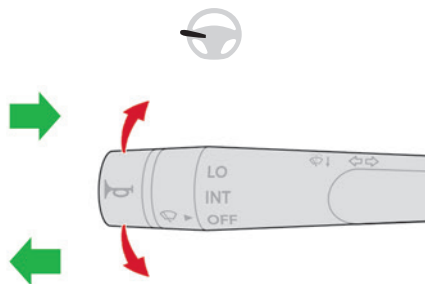
When the ignition is switched on, all the lights come on (sidelamps, dipped beam headlamps and number plate lamps).

When the ignition is switched off, all the lights go out.

i In some weather conditions (e.g. low temperature or humidity), misting on the internal surface of the glass of the headlamps and rear lamps is normal, and will disappear after the lamps have been on for a few minutes.

! Never look too closely at the light beam of LED lamps/headlamps: risk of serious eye injury!

Direction indicators



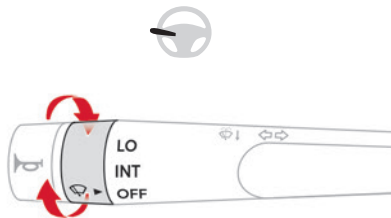
► Left or right: lower or raise the multifunction control stalk beyond the point of resistance.

Three flashes

► Press briefly upwards or downwards (without going beyond the point of resistance) and the direction indicators will flash 3 times.

Wipers/Screenwash

Wipers



► Turn the knob to the desired position:

- | | |
|------------|-------------------|
| LO | Continuous wipe |
| INT | Intermittent wipe |
| OFF | Switching off |

i Before operating the wipers in wintry conditions, clear any snow, ice or frost from the windscreen, and from around the wiper arms and blades.

! Never operate the wipers when the windscreen is dry. Before operating the wipers when the weather is extremely cold or hot, check that the wiper blades are not stuck to the windscreen.

Screenwash



► Pull the wiper control stalk towards you and hold.

The screenwash operates as long as you hold the multifunction control stalk, followed by a cycle of 5 wipes when you release the stalk.

! To avoid damaging the wiper blades, do not operate the screenwash if the screenwash reservoir is empty. Only operate the screenwash if there is no risk of the fluid freezing on the windscreen and hindering visibility. In winter, use "very cold climate" rated products. Never top up with water.

i To ensure flat-bladed wipers remain effective:

- Handle them with care.
- Clean them regularly using soapy water.
- Do not use them to hold a piece of cardboard against the windscreen.

- Replace them at the first signs of wear.

Changing a wiper blade

Removing/refitting



! Take care not to hold the arms at the jet locations.

Do not touch the wiper blades. Risk of irreparable damage.

Do not release them while moving them.
Risk of damaging the windscreen!

- ▶ Clean the windscreen using screenwash fluid.
- ▶ Grasp the wiper blade by its rigid part and pull it towards you as far as it will go.
- ▶ While keeping the wiper arm raised, unclip the worn blade and remove it.
- ▶ While keeping the wiper arm raised, install the new blade and clip it into place.
- ▶ Lower the arm carefully and support it until it reaches the windscreen.

Safety - General recommendations

! Do not remove the labels attached in different places on your vehicle. They include safety warnings as well as identification information for the vehicle.

i For any work on your vehicle, use a qualified workshop that has the technical information, skills and equipment required, all of which a dealer or qualified workshop is able to provide.

! Depending on national regulations, certain safety equipment may be mandatory: high visibility safety vests, warning triangles, breathalysers, spare bulbs, spare fuses, fire extinguisher, first aid kit, etc.

! **Installing equipment and accessories**
Fitting electrical equipment or accessories not approved by the Manufacturer may cause excessive power consumption and faults in your vehicle's electrical system. Contact a dealer or qualified workshop for information on the range of approved accessories. Any modification or adaptation not intended or authorised by the Manufacturer or carried out without meeting the technical

requirements defined by the Manufacturer will result in the suspension of the commercial warranty.

Hazard warning lamps



- Pressing this button causes all the direction indicators to flash. They can operate with the ignition off.

Horn



- Press the button located on the end of the multifunction control stalk.

Seat belts

The seat belts are equipped with an inertia reel which allows the strap length to automatically adjust to your shape. The seat belt returns to its storage automatically when it is not used. The inertia reels are fitted with a device which automatically locks the strap in the event of a collision, emergency braking or if the vehicle rolls over. It can be released by pulling the strap firmly and then releasing it so that it reels in slightly.

Fastening

- Pull the strap, then insert the tongue into the buckle.
- Check that the seat belt is fastened correctly by pulling on the strap.

Unlocking

- Press the red button on the buckle.
- Guide the seat belt as it is reeled in.

Advice

! The driver must ensure that the passenger uses the seat belt correctly and that it is securely fastened before setting off. The driver or passenger must always fasten their seatbelt even for short journeys. Before and after use, ensure that the seat belt is reeled in correctly.

**Installation**

The lower part of the strap must be positioned as low as possible on the pelvis. The upper part must be positioned in the hollow of the shoulder.

In order to be effective, a seat belt must:

- be tightened as close to the body as possible.
- be pulled in front of you with a smooth movement, checking that it is not twisted.
- must only be used to secure one person.
- must not show signs of tearing or fraying.
- must not be changed or modified, in order to avoid affecting its performance.

**Recommendations for children**

Use a suitable child seat if the passenger is less than 12 years old or shorter than one and a half metres.

Make sure that the seat belt is correctly positioned and tightened.

Never use the same seat belt to secure more than one child.

Never carry a child on your lap.

For more information on **Child seats**, refer to the corresponding section.

**Maintenance**

Have the seat belts checked regularly by a dealer or qualified workshop, particularly if the straps show signs of damage.

Clean the seat belt straps with soapy water or a textile cleaning product, sold by dealers or qualified workshops.

Child seats



The regulations on carrying children are specific to each country. Refer to the legislation in force in your country.

For maximum safety, please observe the following recommendations:

- In accordance with European regulations, **all children under the age of 12 or less than 1.5 metres tall must travel in approved child seats appropriate for their weight**, on seats fitted with a seat belt.
- **Children weighing less than 9 kg must travel in the "rearward facing" position.**

Advice



An incorrectly installed child seat in a vehicle compromises the child's safety in the event of an accident.

Ensure that there is no seat belt or seat belt buckle under the child seat, as this could destabilise it.

Remember to fasten the seat belts or the child seat harness keeping the slack relative to the child's body to a minimum, even for short journeys.

Check that the seat belt is properly tightened over the child seat and that it holds the child seat firmly against the vehicle seat.

For child seats with a support leg, ensure that the support leg is in firm and steady contact with the floor.

**Installing a booster seat**

The chest part of the seat belt must be positioned on the child's shoulder without touching the neck. Ensure that the lap part of the seat belt passes correctly over the child's thighs. Use a booster seat with a backrest, equipped with a belt guide at shoulder level.



- As a safety measure, do not leave:
- A child alone and unsupervised inside the vehicle.
 - A child or an animal in a vehicle exposed to the sun with the windows closed.
 - The keys inside the vehicle.

Locations for child seats secured using the seat belt

In accordance with European regulations, this table indicates the options for installing child seats secured using the seat belt and universally approved **(a)** in relation to the weight of the child.

Seat	Weight of the child/indicative age			
	Under 13 kg (groups 0 (b) and 0+) Up to about 1 year old	From 9 to 18 kg (group 1) From about 1 to 3 years old	From 15 to 25 kg (group 2) From about 3 to 6 years old	From 22 to 36 kg (group 3) From about 6 to 10 years old
Passenger seat	U	UF	UF	UF

U: Seat position suitable for installing a child seat secured using the seat belt and universally approved for "rearward facing" and/or "forward facing" use.

UF: Seat position suitable for installing a child seat secured using the seat belt and universally approved for "forward facing" use.

X: Seat position not suitable for installing a child seat for the stated weight class.

(a) Universal child seat: child seat which can be installed in any vehicle using the seat belt.

(b) Group 0: birth to 10 kg. Carrycots and "car" infant carriers cannot be installed on the front passenger seat.

Driving recommendations

General information

- Observe the driving regulations and remain vigilant whatever the traffic conditions.
- Monitor your environment and keep your hands on the wheel to be able to react to anything that may happen any time.
- Drive smoothly, anticipate the need for braking and maintain a longer safety distance, especially in bad weather.
- Stop the vehicle to carry out operations that require close attention (such as adjustments).

⚠ Never drive with the parking brake applied. Risk of overheating and damaging the braking system!
Never leave a vehicle running unattended.
 If the driver must leave the vehicle, the parking brake must be applied and **N** mode selected using the drive selector.

On flooded roads

We strongly advise against driving on flooded roads, as this could seriously damage your vehicle's motor and electrical systems.



If you are obliged to drive on a flooded road:

- Check that the depth of water does not exceed 10 cm, taking account of waves that might be generated by other users.
 - Drive as slowly as possible without stalling.
- In all cases, do not exceed 6 mph (10 km/h).
- Do not stop and do not switch off the motor.

On leaving the flooded road, as soon as safety conditions allow, make several light brake applications to dry the brake discs and pads. If in any doubt about the condition of your vehicle, consult a dealer or qualified workshop.

Electric mobility

Exterior sound environment

Pay particular attention to children, pedestrians, cyclists and motorcyclists. As this vehicle uses a silent means of propulsion, these people may not be aware that a vehicle is approaching. In order to avoid a collision with these people, the vehicle is fitted with a pedestrian horn.

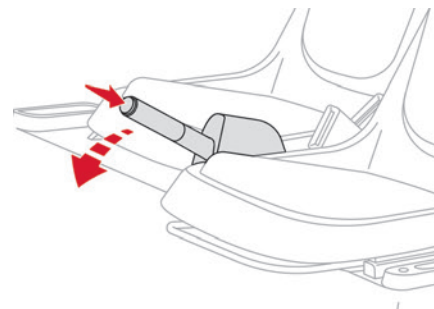
Interior sound environment

During use, you may hear certain perfectly normal noises specific to electric vehicles, such as:

- Regenerative braking.
- Traction battery relay when starting.
- Vehicle tyres or aerodynamics when driving.

Parking brake

Unlocking



- Pull the parking brake lever up slightly, press the release button, then lower the lever fully.

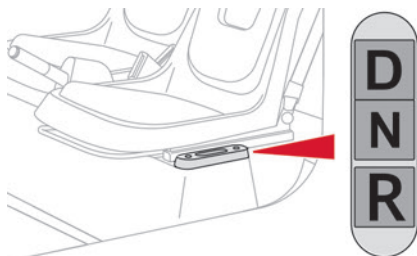
(P) If this warning lamp lights up when the vehicle is moving, this indicates that the parking brake is still applied or has not been fully released.

Application

- Pull the parking brake lever up to immobilise the vehicle.

- i** When parking on a slope, turn the wheels against the kerb and/or place a chock behind one of the wheels, apply the parking brake and switch off the ignition.

Drive selector



The drive selector has 3 buttons:

- D.** Forward (Drive)
- N.** Neutral
- R.** Reverse (Rear)

When the ignition is switched on, the instrument panel lights up. When the motor is switched on, **N** mode is displayed on the instrument panel, along with the **READY** warning lamp.

- To move to **D** or **R** mode, depress the brake pedal and then press the desired button.



By default, this lamp flashes.



Do not depress the accelerator pedal when switching to **D** or **R** mode.



Engine braking and energy recovery

The vehicle is fitted with an energy recovery system which operates during deceleration: regenerative braking. This system of engine braking consists of recovering part of the energy generated during deceleration and feeding it back to the traction battery in order to improve the vehicle's driving range.

When the traction battery is fully charged and during the first few miles/kilometres of a journey, the regenerative braking does not operate.

Adapt your driving style and use the brake pedal.



Engine braking and brake pedal

The engine braking can never replace the brake pedal.

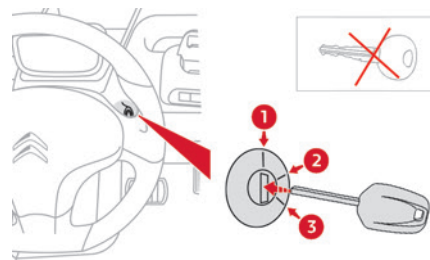
When driving downhill, it is essential not to exceed the maximum speed of the vehicle and to voluntarily limit its speed by using the brake pedal.



In order to protect the drive chain, a slight decrease in performance may be observed at low temperatures or during prolonged use of maximum power.

Starting/Stopping the vehicle

Ignition switch



- 1. Stop position**
Switching off the engine.
- 2. Ignition on position**
Use electrical accessories.
- 3. Starting position**
Engine starting.

Starting

When the ignition is switched on, the instrument panel lights up, all lights come on and the steering column is unlocked.



- ▶ Turn the ignition key fully forward. When the motor is started, **N** mode is displayed on the instrument panel, along with the **READY** warning lamp.
- ▶ Depress the brake pedal.
- ▶ Select **D** or **R** mode using the drive selector.
- ▶ Release the parking brake.
- ▶ Release the brake pedal.
- ▶ Depress the accelerator pedal and the vehicle moves off.

! If, in the 5 seconds following selection of **D** or **R** mode, the accelerator pedal is not depressed, an audible signal sounds. Starting the motor is impossible while the vehicle is connected to a power socket.

go out and the steering column is locked automatically.

! If the instrument panel remains on after the ignition has been switched off, contact an authorised dealer.

! Never leave the vehicle with the key in the ignition and a child or animal alone in the vehicle, even for a short time.

Switching off

- ▶ Depress the brake pedal.
- ▶ Apply the parking brake.
- ▶ Turn the ignition key fully towards you.
- ▶ Release the brake pedal.

A few seconds after the ignition is switched off, the instrument panel goes off, all the lights

Charging the traction battery

Principle

The traction battery stores the energy needed to operate the electric motor and the vehicle's electrical cabin components. It is discharged during use, and must therefore be regularly recharged. There is no need to wait for the traction battery to fall to its reserve level before recharging.

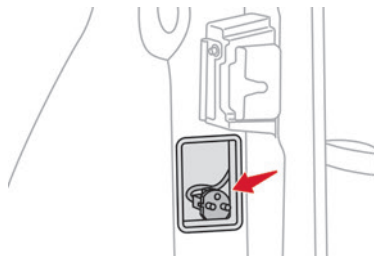
The traction battery's driving range varies according to the conditions of use: speed, driving style, heating, load carried and road surface.

The traction battery's driving range can also vary depending on whether the age of its components.

Like any equipment with a lithium-ion battery, the vehicle incorporates a protection mode to optimise the durability of its traction battery. Depending on the charge level and temperature of its traction battery, power may be limited to protect the battery cells.

This protection mode affects the maximum speed of the vehicle at low charge level (< 20%) and at low or high battery temperature (< +5°C or > +45°C).

The relief of the road, such as climbing a steep slope, also affects the maximum speed that the vehicle can reach.



The charging cable is permanently attached to the vehicle. It is stored in its housing located inside the passenger door frame under the door latch.



The single-phase AC domestic mains power socket must be standard type E/ F* 16 A; load is limited to 8 A.

To charge the battery, unfurl the charging cable fully before connecting it to the domestic power supply.

For a full charge, follow the charging procedure until it stops automatically.

To interrupt the charging process at any time, disconnect the charging cable, unlock the passenger door and store the cable in its housing.

Charging progress is permanently displayed on the instrument panel.

Charging connector adapter

The charging connector adapter supplied with the vehicle is compatible with the electrical systems in the country of sale.

The charging connector adapter allows to connect the domestic charging cable from the vehicle to a Type 2 charging socket.

Characteristics	
Intensity max direct current (DC) voltage	16 A
Charging socket configuration	Type 2
Operating temperature range	-40°C to +50°C

The charging connector adapter is also available as an accessory.

For more information, contact a CITROËN dealer or a qualified workshop.



Charging progress can also be checked via the **MyCitroën App** application in combination with the connector unit (sold separately).

* Type J for Switzerland

! For safety reasons, the motor will not start while the charging cable is connected.
Fully charge the traction battery at least once a month.

! **Charging temperature**
For vehicles manufactured before 2020/11/23, the charging is possible at temperatures between 0°C and +50°C. From this date, the charging is possible at temperatures between -5°C and +50°C.

i **Parking in cold wheather**
When the outside temperature drops below +5°C:
– Park the vehicle in an enclosed area.
– Maintain a charge level of the traction battery above 50%.

i **Vehicle immobilised for a long period (more than 3 weeks)**
Park the vehicle in a location that is protected from the elements and where the temperature is between 0°C and +40°C (exposure to extreme temperatures can damage the traction battery).
The charging level in the traction battery must be around 50%.
Disconnect the connector unit.
Remove the F7-50 A fuse.
Disconnect the 12 V battery.

Important recommendations

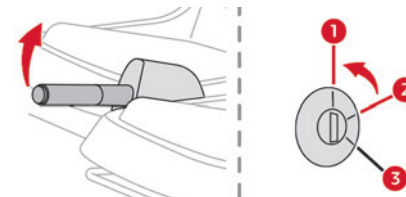
! **Power socket**
Have a professional check that the electrical system to be used complies with applicable standards and is compatible with the vehicle.
Always use a correctly earthed power socket, protected by a 30 mA residual current device.
Always use a power socket that is protected by a circuit-breaker appropriate for the electrical circuit's current rating.

! **Charging cable**
Incorrect use of this charging cable may result in fire, property damage and serious injury or death by electrocution!
Never use the charging cable if it is defective or damaged in any way (corrosion, cuts).
Never attempt to repair or open the charging cable.
If the charging cable is defective, consult a dealer or qualified workshop to obtain a replacement.
Never use the charging cable with an extension cable, a multi-plug socket, a conversion adaptor or in a damaged power socket.
Never immerse the charging cable in water.
Never attempt to move the vehicle using the charging cable.

! **Plugging in/Unplugging**
Never plug the cable into the wall socket (or unplug it) with wet hands. Immediately stop charging if the charging cable or wall socket become too hot to touch.
Do not expose it to flammable vapours - Risk of electrical arcing or sparks!
After connecting the charging cable, check that the instrument panel switches on, otherwise disconnect and reconnect the charging cable.
Charging will not start if the parking brake is not applied.

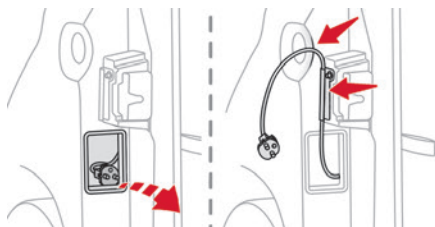
Connection

► Park the vehicle as close as possible to a power socket.

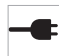


► Apply the parking brake.

READY ► Switch off the ignition (position 1); the **READY** warning lamp goes out.



- ▶ Open the passenger door.
- ▶ Pull the charging cable fully out of its housing.
- ▶ Close the passenger door, passing the charging cable through the guide hole in the door frame and then into the handle recess.
- ▶ Connect the charging cable to the power socket. The instrument panel lights up.
- ▶ Check that the charging cable is not stretched tight.

 This indicator lamp lights up on the instrument panel, along with dashes instead of the charging time.



The remaining charging time is displayed after a few minutes.

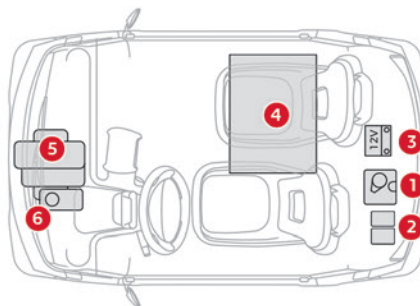
The charge level increases slowly as charging progresses.

When the charge is completed, the instrument panel switches off.

Disconnection

- ▶ Disconnect the charging cable from the power socket.
- ▶ Open the passenger door.
- ▶ Store all of the charging cable inside its housing.
- ▶ Close the passenger door.

Electric motor




1. Screenwash fluid reservoir
2. Fuse box
3. 12 V battery
4. Traction battery/48 V electrical circuit
5. Electric motor

6. Brake fluid reservoir


Checking levels

Check all of the following levels regularly in accordance with the Manufacturer's service schedule. Top them up if required, unless otherwise indicated.


If a particular level has dropped significantly, have the corresponding circuit checked by a dealer or qualified workshop.

 Fluids must comply with the Manufacturer's recommendations.

Used products

 Avoid prolonged contact of used fluids with the skin.

Most of these fluids are harmful to health and very corrosive.

 Do not discard used fluids into sewers or onto the ground.

Drain used fluids into the dedicated containers provided by dealers or qualified workshops.

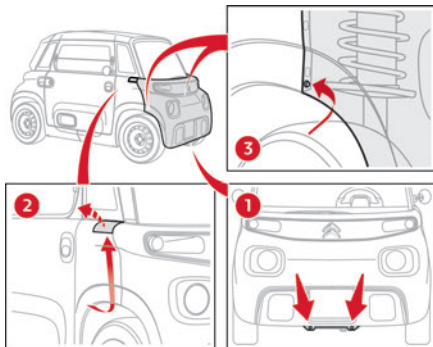
Brake fluid

⚠ Before doing any work

Switch off the ignition, apply the parking brake, check that the instrument panel is off and that the charging cable is not connected.

To find out how often the brake fluid should be replaced, refer to the Manufacturer's servicing schedule.

Removing front bumper



- ▶ Remove the 2 lower fixing screws from the frame.
- ▶ Remove the 2 upper access flaps from the wings, pass an arm under the wing and lift it up.
- ▶ Remove the 2 upper side fixing screws from the wheel arches.

- ▶ Remove the 2 lower side fixing screws from the wheel arches.
- ▶ Pull the bumper horizontally for about ten centimetres until the attachment points come away.
- ▶ Disconnect the indicator wiring looms.

⚠ Before topping up, it is necessary to protect the motor and its connectors in order to avoid any risk of brake fluid splashing onto them.

Topping up

⚠ Use only DOT4 brake fluid from a sealed container.

- ▶ Clean the cap before removing it to refill.
- ▶ The level of this fluid should be close to the "MAX" mark. If not, check the brake pads for wear.

Refitting front bumper

- ▶ Bring the bumper close to the frame.
- ▶ Connect the indicator wiring looms.
- ▶ Place it in position and then push the bumper horizontally until the attachment points clip into place.
- ▶ Screw the 2 upper side fixing screws into the flaps.
- ▶ Screw the 2 lower side fixing screws into the wheel arches.
- ▶ Screw the 2 lower fixing screws into the frame.

- ▶ Clip the 2 upper access flaps to the wings.

Screenwash fluid

Access/Topping up

The fluid must be topped up with a pre-mixed product.

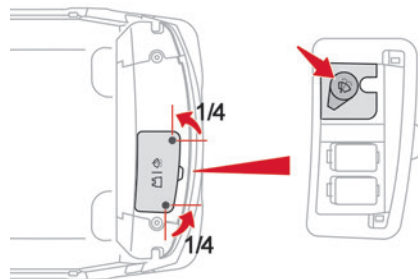
In winter (temperatures below 0°C), a fluid containing an anti-freeze agent which is appropriate for the temperature conditions must be used in order to protect the system's components (pump, tank, ducts, jets).

⚠ Filling with pure water is prohibited in all circumstances (risk of freezing, limescale, etc.).



- ▶ Top up to the required level when necessary.

Tank capacity: 1 litre.




- ▶ Turn both fixing screws a quarter turn.
- ▶ Unclip the access cover.

- Remove the cap from the tank to top up.

Checks

Unless otherwise indicated, check these components in accordance with the Manufacturer's service schedule. Otherwise, have them checked by a dealer or qualified workshop.


 Only use products recommended by the Manufacturer or products of equivalent quality and specification. In order to optimise the operation of components as important as those in the braking system, the Manufacturer selects and offers very specific products.

12 V battery



The battery does not require any maintenance.

Check regularly that the terminals are correctly tightened and that the connections are clean.

 For more information on the precautions to take before any work on the **12 V battery**, refer to the corresponding section.

Manual parking brake



If you notice excessive brake lever travel or decreased effectiveness, the parking

brake must be adjusted, even between two services.

This system must be checked by a dealer or qualified workshop.

Brake pads/Discs/Drums



Brake wear depends on the style of driving, particularly in the case of vehicles used in town, over short distances. It may be necessary to have the condition of the brakes checked, even between vehicle services. Unless there is a leak in the circuit, a drop in the brake fluid level indicates that the brake pads are worn.



For information on checking brake disc/drum wear, contact a dealer or a qualified workshop.



After washing the vehicle, moisture, or in wintry conditions, ice can form on the brake discs and pads: braking efficiency may be reduced. Gently dab the brakes to dry and defrost them.

Wheels and tyres



All tyre pressures must be checked when the tyres are cold.

The pressures indicated on the tyre pressure label are valid for "cold" tyres. If you have driven for more than 10 minutes or more than 6 miles (10 kilometres), add 0.3 bar (30 kPa) to the values indicated on the label.



Under-inflation increases energy consumption. Non-compliant tyre pressures cause tyres to wear prematurely and have an adverse effect on the vehicle's road holding - risk of accident!

Driving with worn or damaged tyres reduces the braking and road holding performance of the vehicle. We recommended regularly checking the condition of tyres (tread and sidewalls) and wheel rims as well as the presence of valves.

When the wear indicators no longer appear set back from the tread, the depth of the grooves is less than 1.6 mm; it is essential to replace the tyres.

Using different size wheels and tyres from those specified can affect the lifetime of tyres, wheel rotation, ground clearance, the speedometer reading and have an adverse effect on road holding.

Shock absorbers



It is not easy for drivers to detect when shock absorbers are worn. Nevertheless, shock absorbers have a major impact on road holding and braking performance. For your safety and driving comfort, it is important to have them regularly checked by a dealer or a qualified workshop.

Changing to free-wheeling

In certain situations, you must allow the vehicle to free-wheel (when being towed, on a rolling road, transport by rail or sea, etc.).

- Switch the ignition off.
- Release the parking brake.

Advice on care and maintenance

General information - Exterior



Do not wash the vehicle in full sunshine or in extremely cold conditions.

Do not use a high pressure washer or automatic carwash to clean the vehicle.

Use a water jet (temperature between +20°C and +40°C).



Before starting to clean your vehicle, remember to lock the windows and doors.

Use a sponge and soapy water or a pH neutral product.

Move the water jet perpendicular to the surface to be cleaned, avoiding the door seals.

Rinse the vehicle using demineralised water, then gently wipe the bodywork with a clean microfibre cloth.

Promptly clean off any marks containing corrosive chemical substances liable to damage the vehicle's paintwork (including tree resin, bird droppings, insect secretions, pollen and tar).

If justified by the environment, clean the vehicle more frequently to remove salty deposits (in coastal areas), soot (in industrial areas) and mud (in wet or cold areas). These substances can be highly corrosive.

Contact a dealer or qualified workshop for advice on removing stubborn stains requiring special products (such as tar or insect removers).

General information - Interior



When cleaning your vehicle, never clean the interior with a jet of water.

Any liquids carried inside the vehicle in mugs or other open containers can spill, presenting a risk of damage if they come into contact with the controls on the dashboard. Be alert!

Bodywork



Do not use abrasive products or solvents, petrol or oil to clean the bodywork.

Never use an abrasive sponge to clean stubborn stains. Risk of scratching the paintwork!

Do not apply polish.

Decals

(Depending on version)



Do not use a high-pressure washer to clean the vehicle - risk of damaging or detaching the decals!



Use a high-flow hose (temperature between 25°C and 40°C).

Place the jet of water perpendicular to the surface to be cleaned.

Rinse the vehicle with demineralised water.

Textile - Maintenance



Do not use aggressive cleaning products (e.g. alcohol, solvent or ammonia).

Do not use steam-cleaning systems - Risk of affecting the adhesion of the fabrics!



Remove dust from the textile parts regularly with a dry cloth, soft brush or vacuum cleaner.

Rub down the textile parts once per year with a clean, damp cloth. After leaving overnight to dry, brush with a soft-bristled brush.

Textile - Stain removal



Do not rub the stain or it may spread or you may cause the substance to penetrate the surface.



Act quickly by reducing the stain from its edges inwards.

Remove as much substance or solids as possible using a spoon or spatula, and remove as much liquid as possible using absorbent paper.



Product/Procedure to use depending on the type of stain:

- Grease, oil and ink: clean with a pH-neutral detergent.
- Vomit: clean with sparkling mineral water.
- Blood: spread flour over the stain and allow to dry; remove with a slightly damp cloth.
- Mud: allow to dry and then remove with a slightly damp cloth.
- Cake, chocolate, ice cream: clean with lukewarm water.

– Sugary and/or alcoholic drinks: clean with lukewarm water, or lemon juice if the stain is persistent.

– Hair gel, coffee, tomato sauce, vinegar: clean with lukewarm water and lemon juice. For solid substances, then use a soft brush or vacuum cleaner.

For liquid substances, then use a damp microfibre cloth and then dry with another cloth.

Changing a wheel

The vehicle is not equipped with on-board tools, such as a jack or wheel brace.

In the event of a flat tyre, call a dealer or qualified workshop.

To have winter tyres fitted or the wheels changed, consult a dealer or qualified workshop.

Changing a bulb

Cleaning

The headlamps have polycarbonate lenses with a protective coating:

– **Do not clean them with a dry or abrasive cloth, nor with detergent or solvent products.**

- Use a sponge and soapy water or a pH neutral product.
- When using a jet of water to clean off persistent marks, do not keep the jet directed towards the headlamps, lamps or their edges for too long, so as not to damage their protective coating and seals.

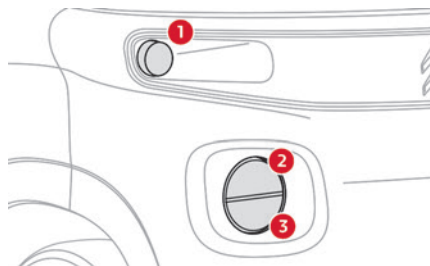
Light-emitting diodes (LEDs)

Do not touch LED headlamps/lamps. To replace this type of bulb, you must consult a dealer or qualified workshop.

Direction indicators

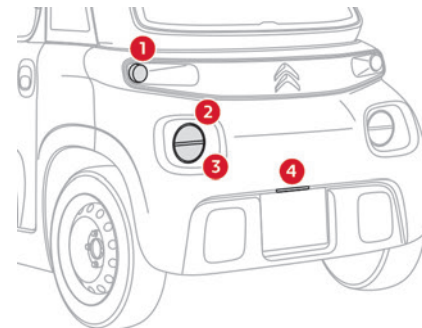
Rapid flashing of the indicator lamp for a direction indicator (left or right) indicates that one of the bulbs on the corresponding side has failed.

Front lamps



1. Direction indicators
2. Sidelamps
3. Dipped beam headlamps

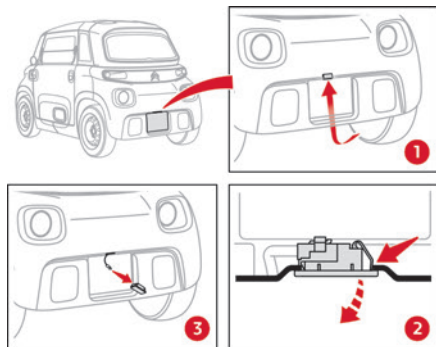
Rear lamps



1. Direction indicators
2. Sidelamps
3. Brake lamps
4. Number plate lamp

Number plate lamp

Removing



- Lie down behind the vehicle in the middle of the rear bumper.
- Pass your arm behind the bumper to reach the lamp above the foam shock absorber.
- Pinch the fixing clip holding the lamp.
- Push the lamp down while holding the fixing clip.
- Disconnect the lamp from its wiring loom.
- Leave the wiring loom dangling through the bumper.

Refitting

- Connect the new lamp to the suspended wiring loom.
- Replace the lamp into its housing by pressing it until it clips into place.

Changing a fuse

Before changing a fuse:

- Identify the cause of the fault and fix it.
- Switch off all power consumption.
- Immobilise the vehicle and switch off the ignition.
- Identify the defective fuse using the current allocation tables and diagrams.

To replace a fuse, it is essential to:

- Pull the fuse out of its housing and check the state of its filament.
- Always replace the failed fuse with a fuse of the same rating (same colour); use of a different rating may cause malfunctions - risk of fire!

If the fault recurs soon after replacing a fuse, have the electrical system checked by a dealer or qualified workshop.



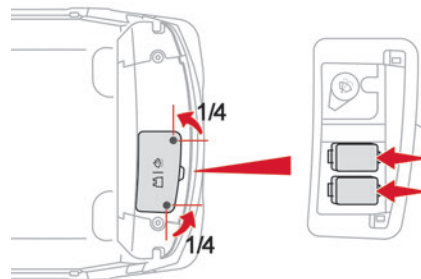
i The fuse allocation tables and corresponding diagrams are available through a dealer or qualified workshop. Replacement with a fuse not shown in the allocation tables could cause a serious malfunction of the vehicle. Consult a dealer or qualified workshop.



Installing electrical accessories

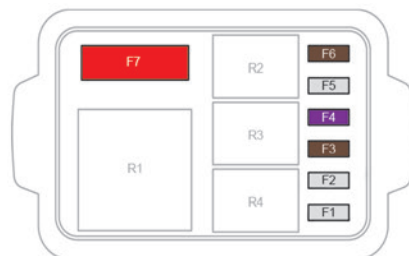
Before fitting other electrical equipment or accessories to your vehicle, contact a dealer or a qualified workshop. The Manufacturer accepts no responsibility for any costs incurred in repairing the vehicle or for rectifying malfunctions resulting from the installation of accessories not supplied or not recommended by the Manufacturer and not installed in accordance with its recommendations, in particular when the combined power consumption of all of the additional equipment connected exceeds 10 milliamperes.

Accessing the fuses



- Turn both fixing screws a quarter turn.
- Unclip the access cover.
- Pull out the faulty fuse and replace it.

Fuse table - Box 1



Fuse N°	Rating (Amps)	Functions
F1	2 A	Brake switch (+Battery)
F2	2 A	Main computer (+Battery)
F3	7.5 A	Fan
F4	3 A	Instrument panel
F5	2 A	Battery computer
F6	7.5 A	Horn
F7	50 A	Battery drive train/ DC/DC converter

Fuse table - Box 2



Fuse N°	Rating (Amps)	Functions
F1	2 A	Steering mounted control (left)
F2	4 A	Main computer (+After ignition)
F3	15 A	Screenwash pump
F5	2 A	Instrument panel warning lamps
F7	2 A	Motor computer
F8	2 A	Brake switch (+After ignition)

Fuse N°	Rating (Amps)	Functions
F9	3 A	USB socket - Lighting for ventilation/heating/ demisting buttons, drive selector
F11	7.5 A	Diagnostic socket
F12	15 A	Wiper motor (+Battery)
F13	2 A	Rear left wheel speed sensor
F14	3 A	Sidelamps front left and rear right - Number plate lamp
F15	2 A	Sidelamps rear left and front right
F16	3 A	Right-hand dipped beam headlamp
F17	3 A	Left-hand dipped beam headlamp
F18	15 A	Wiper motor (+After ignition)

12 V battery

Lead-acid starter batteries



These batteries contain harmful substances (sulphuric acid and lead). They must be disposed of in accordance with regulations and must never under any circumstances be discarded with household waste.

Take used remote control batteries and vehicle batteries to a special collection point.



Protect your eyes and face before handling the battery.

All operations on the battery must be carried out in a well ventilated area and away from naked flames and sources of sparks, to avoid any risk of explosion or fire. Wash your hands afterwards.



Flat 12 V battery

It is no longer possible to start the motor or recharge the traction battery.



Before working on the 12 V battery

Switch off the ignition, apply the parking brake, check that the instrument panel is off and that the charging cable is not connected.



Recharging the 12 V battery

Do not recharge the battery without first disconnecting the terminals and removing the battery. Do not disconnect the battery terminals while the **READY** indicator lamp is lit, or while the vehicle is charging.



Jump-starting another vehicle

Do not use the 12 V battery to jump-start another vehicle or to charge another vehicle's battery.

Symbols



No sparks or naked flames, no smoking.



Always protect your eyes. Explosive gases can cause blindness and injury.



Keep the vehicle's battery out of the reach of children.



The vehicle's battery contains sulphuric acid which can make you go blind or cause severe burns.



For more information, refer to the handbook.



Explosive gases can be present close to the battery.

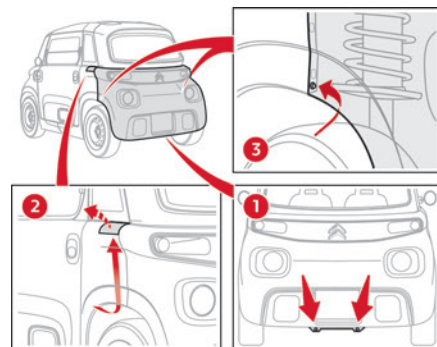
Removing/Refitting

Removing rear bumper

► Remove the number plate lamp prior to starting.

For more information on the **Number plate lamp**, refer to the corresponding section.

► Pass the lamp's suspended wiring loom behind the bumper.



► Remove the 2 lower fixing screws from the frame.

► Remove the 2 upper access flaps from the wings, pass an arm under the wing and lift it up.

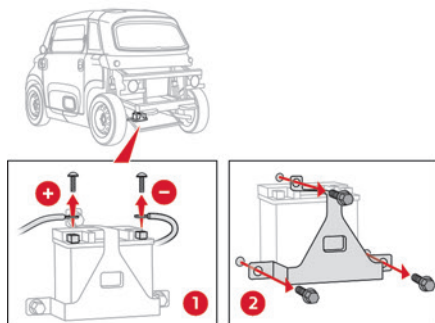
► Remove the 2 upper side fixing screws from the flaps.

► Remove the 2 lower side fixing screws from the wheel arches.

- Pull the bumper horizontally for about ten centimetres until the attachment points come away.

- Disconnect the indicator wiring looms.

Removing the battery



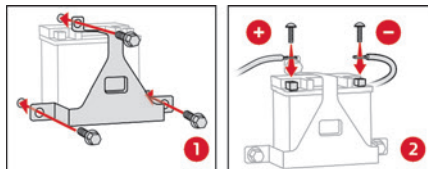
- Disconnect the negative terminal first (right-hand side), next disconnect the positive terminal (left-hand side):

- Unscrew and remove the screw from the clamp.
- Remove the clamp from the terminal.

- **Make sure that any disconnected clamps do not come into contact with the battery terminals - Risk of short-circuit!**

- Unscrew the 3 fixing screws on the battery's retainer brace.
- Remove the retainer brace and then the battery.

Refitting the battery



- Place the battery into its compartment.
- Replace the retainer brace and its 3 fixing screws.
- Reconnect the positive terminal first (left-hand side), next reconnect the negative terminal (right-hand side):
 - Insert the nut horizontally into the terminal's square housing.
 - Place the clamp on top of the terminal.
 - Insert the screw into the terminal and nut and screw tight.

Refitting rear bumper

- Bring the bumper close to the frame.
- Pass the lamp's suspended wiring loom in front of the bumper.
- Connect the indicator wiring looms.
- Place it in position and then push the bumper horizontally until the attachment points clip into place.
- Screw the 2 upper side fixing screws into the flaps.
- Screw the 2 lower side fixing screws into the wheel arches.

- Screw the 2 lower fixing screws into the frame.
 - Clip the 2 upper access flaps to the wings.
 - Finally, replace the number plate lamp.
- For more information on the **Number plate lamp**, refer to the corresponding section.

Starting using another battery

If the vehicle's battery is flat, the motor can be started using a backup battery (either external or from another vehicle) and jump leads or using a battery booster.



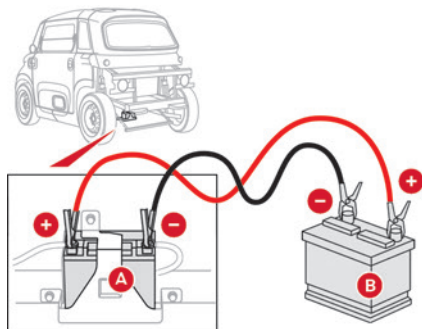
Never start the motor by connecting a battery charger.

Never use a 24 V or higher battery booster. Check beforehand that the backup battery has a nominal voltage of 12 V and a capacity at least equal to that of the discharged battery.

The two vehicles must not be in contact with each other.

Disconnect or turn off all electrical devices in both vehicles (portable devices, radio, wipers, lights, etc.).

Do not disconnect the (+) terminal while the motor is switched on.



- ▶ Connect the red cable to the (+) terminal of the flat battery **A**, then to the (+) terminal of the backup battery **B**, or booster.
 - ▶ Connect one end of the green or black cable to the (-) terminal of the backup battery **B** or of the booster (or to an earth point on the assisting vehicle).
 - ▶ Connect the other end of the green or black cable to the negative (-) terminal of flat battery **A**.
 - ▶ Start the engine/switch on the motor on the assisting vehicle and leave it running for a few minutes.
 - ▶ Turn the ignition key to start the disabled vehicle.
- The traction battery takes over the supply to the 12 V circuit.
- ▶ Wait for the assisting vehicle to return to idle.
 - ▶ **Disconnect the jump leads in reverse order.**

- ▶ Leave the vehicle switched on for at least 30 minutes to allow the traction battery to recharge the 12 V battery.
- If the battery charge level in the traction battery is too low, connect the vehicle's charging cable.

Charging the battery using a battery charger

For optimum service life of the battery, it is essential to maintain an adequate level of charge.

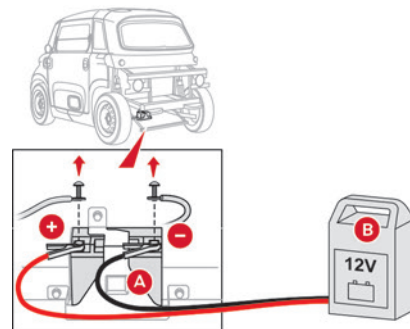
In some circumstances, it may be necessary to charge the battery:

- When using the vehicle mainly for short journeys.
- If the vehicle is to be taken off the road for several weeks.



To recharge the vehicle's battery yourself:

- Only use a charger compatible with lead-acid batteries and with a nominal voltage of 12 V.
 - Follow the instructions provided by the manufacturer of the charger.
 - Never reverse polarities.
 - Disconnect the 12 V battery.
- Make sure the vehicle's charging cable is not connected at the same time.

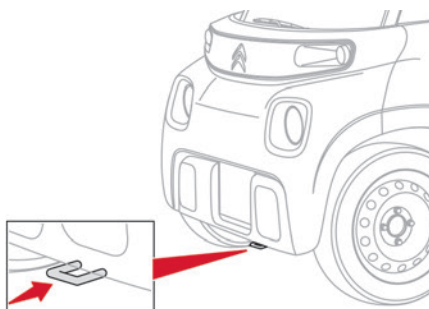


- ▶ Switch the ignition off.
- ▶ Disconnect or turn off all electrical devices (portable devices, wipers, lights, etc.).
- ▶ Switch off charger **B** before connecting the cables to the battery, so as to avoid any dangerous sparks.
- ▶ Ensure that the charger cables are in good condition.
- ▶ Connect the cables from charger **B** as follows:
 - Positive (+) red cable to the (+) terminal on battery **A**.
 - Negative (-) black cable to the (-) terminal on battery **A**.
- ▶ At the end of the charging operation, switch off charger **B** before disconnecting the cables from battery **A**.

Towing the vehicle





i Observe the legislation in force in the country where you are driving.
Before towing the vehicle, it is essential to put the vehicle in free-wheeling mode.
For more information on **Free-wheeling**, refer to the corresponding section.

! An electric vehicle must never be used for road transfers.
It may be used, for example, to exit a rut.



Use the towing eye only to free the vehicle when stuck, or to secure it for recovery on a flatbed lorry or trailer.

Towing constraints

Front wheels on the ground	Rear wheels on the ground	Flatbed	4 wheels on the ground with towbar
			

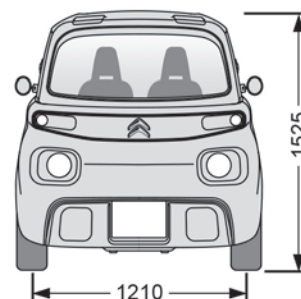
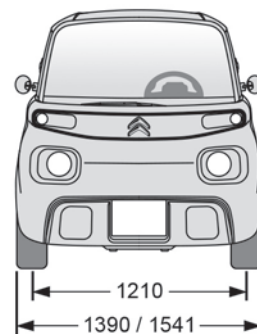
Electric motor

Version	AMI	AMI CARGO
Model code: 9A...	Z2CA	Z2CA
Weights		
Unladen weight, battery included (kg)	483	487
Maximum loading weight with driver (kg)	140	140
Gross vehicle weight (kg)	700	700
Tyres	155/65R14	
Electric motor		
Technology	Synchronous with permanent magnets	
Nominal power: EC standard (kW)/(hp)	6/8.2	
Max. power: EC standard (kW)/(hp)	9.4/12.6	
Traction battery		

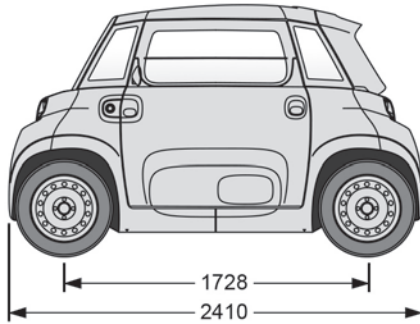
Version	AMI	AMI CARGO
Model code: 9A...	Z2CA	Z2CA
Technology	Lithium-Ion	
Installed capacity (kWh)	5.4 (useful)	
Domestic charging		
Alternating current voltage (Vac)	230 (single-phase)	
Rating (A)	16	
Charging cable length (m)	3	
Charging time (hr)	4 hrs for 100%*	
Driving range (miles/ km)	46/75	

Dimensions (mm)

These dimensions have been measured on an unladen vehicle.



* The charging time varies depending on the temperature of the battery, its age, the charge and discharge cycles and the battery version.

**B. Manufacturer's label**

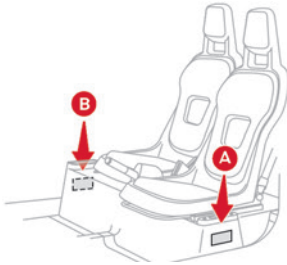
Attached to the base of the passenger seat.

Bears the following information:

- Manufacturer's name.
- European whole vehicle type approval number.
- Vehicle Identification number (VIN).
- Noise level/Rated speed.
- Maximum power/Maximum speed.
- Gross vehicle weight (GVW).

Identification markings

Various visible markings for vehicle identification and vehicle search.

**A. Tyres label**

Attached to the base of the driver's seat.

Indicates tyre inflation pressures when cold.

A	
Accessories	12, 16
Adjusting seat	10
Advice on care and maintenance	27
Advice on driving	19

B	
Battery, 12 V	26, 32
Bodywork	27
Brake discs	26
Bulbs (changing)	29

C	
Changing a bulb	29
Changing a fuse	30
Changing a wheel	29
Changing a wiper blade	15
Changing to free-wheeling	27
Charge level indicator	7
Charging cable	23
Checking the levels	24
Checks	26
Checks, routine	26
Children	16–18
Child seats	17–18
Cleaning (advice)	27
Closing the doors	9
Closing the windows	9

Controls, at steering	14, 16
-----------------------------	--------

D	
Dashboard	4
Demisting	10
Dimensions	36
Direction indicators	14
Display screen	6
Distance recorder	8
Domestic charging	22–23, 36
Doors	9
Drive, electric	3, 20, 24, 36
Driver's seat	10

E	
Eco-driving (advice)	5
Emergency warning lamps	16
Energy recovery	20
Exterior lighting	14

F	
Fittings, interior	11
Fitting the battery	32
Flashing indicators	14
Fluid, brake	25
Fluid, screenwash	25
Fuses	30

H	
Hazard warning lamps	16
Heating	10
Horn	16

I	
Indicators, direction	14
Instrument panel	6
Instruments and controls	4

K	
Key	3, 20

L	
Labels, identification	37
Lamps, front	29
Lamps, rear	29–30
LED lamps	14
LEDs - Light-emitting diodes	29
Level, brake fluid	25
Levels and checks	24
Level, screenwash fluid	25
Light-emitting diodes - LEDs	29
Loading	11
Loading space	11

M	
Mains socket (domestic network)	23
Maintenance (advice)	27
Maintenance, routine	5, 16, 24, 26
Markings, identification	37
Mirrors, door	10
Mobility, electric	3, 19
Motor, electric	24, 36
Multifunction control	14, 16

N	
Number plate lamps	30

O	
On-board tools	29
Opening the doors	9
Opening the windows	9

P	
Pads, brake	26
Parking brake	19, 26
Port, USB	11
Pressures, tyres	26, 37
Protecting children	17-18

R	
Range	5, 7
Recharging the battery	34
Recharging the traction battery	22-23
Regenerative braking (deceleration by engine braking)	20
Removing the battery	32
Removing the front bumper	25
Removing the rear bumper	32
Replacing a wheel	29
Replacing bulbs	29
Replacing fuses	30
Reservoir, screenwash	25

S	
Safety (advice)	3, 16
Screen, monochrome	6
Screenwash	14
Seat belts	16
Selector, drive	20
Serial number, vehicle	37
Servicing	16, 26
Smartphone	11
Starting/Stopping the vehicle	20
Starting using another battery	33
Stickers, customising	27
Storage	11
Suspension	26
Switch, ignition	20

T	
Tables of fuses	30
Technical data	36
Thermal comfort equipment	5
Total distance recorder	8
Towing eye	35
Towing the vehicle	35
Traction battery	3, 22, 36
Traction battery charge	7, 22-23
Tyres	26, 29, 37

V	
Ventilation	10

W	
Warning and indicator lamps	6
Warnings and indicators	6
Washing (advice)	27
Weights	11, 36
Windows	9
Wiper blades (changing)	15
Wipers	14



Automobiles CITROËN declares, in accordance with the provisions of European legislation (Directive 2000/53) relating to End-of-Life Vehicles, that it achieves the objectives set by this legislation and that recycled materials are used in the manufacture of the products that it sells.

Reproducing and translating this document, even partially, is strictly prohibited without written authorisation from Automobiles CITROËN.

Printed in the EU
12-22

ANG. 22AMI.0040

